



extraeye  
first article inspection



extraeye – inline

Pre Reflow **AOI** & **FAI** Solutions in one system.

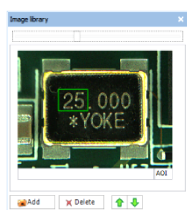
# A6000 **extraeye** in line

A6000 is an in line hardware/software system design to assist the SMT production line, find missing, wrong, shifted components & FAI process. To minimize machine and human mistake before start multiply by operations. The hardware part is a device based on a XY axis system with high quality image, capable to inspect all electronics components from top view down 01005 outlines. By selecting compare automatically every/few board's **extraeye** boosts production process control inspection, reduce fatigue of the personal and as result maintain stability production process accuracy.

## Features & Options:

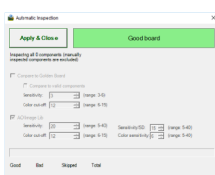
### Components Library:

Automatically run and compare visual record of all components options.



### Automatic Inspection:

Speed up time verification with automatic compare up to 1500 components in 30 sec.



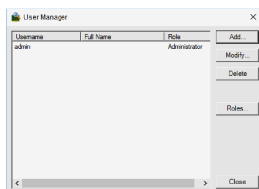
### Electrical Measurements:

Use a wireless LCR to record and save components values.



### User Managements:

Apply user's right's according levels of operators.



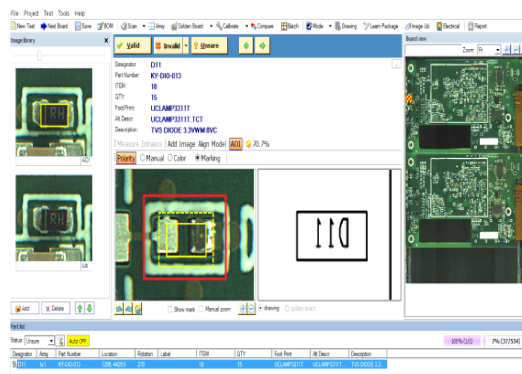
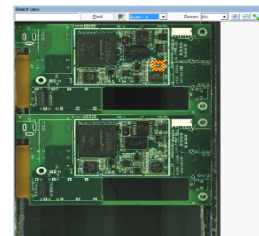
### Drawing View:

View and review assembly drawing in one process approval.



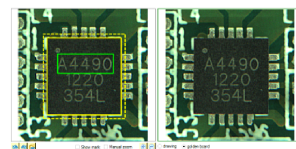
### High Resolution Images:

Save all images at 1800-2100 dpi.



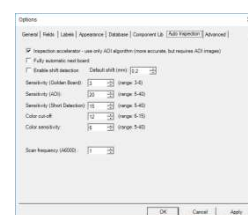
### Golden Board:

Automatic compare and View two images from the current test and Golden Board side by side.



### Every/Few Board Inspection:

Select when or how to control SMT during production at any moment.



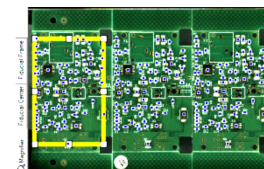
### Batch Inspection:

Speed up FAI approve all from the same in one click.



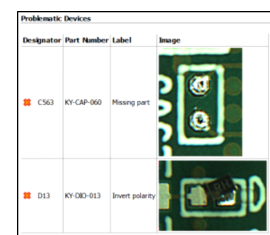
### Array The Board:

Automatically apply panel's board.



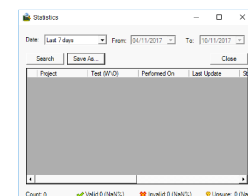
### Detailed Report:

Manage process with high detail's report images.



### SPC:

Control data and production.



Models:	A6000	
Max Board size	500 x 600 mm	
Max Board Height	50 mm	
Power	100-220 VAC 35W	
External size	840x730x1200 mm	
Weight kg	60 kg	
PC(NUC) Only	Include	

Contact us :

**extraeye**

Email: [support@extra-eye.com](mailto:support@extra-eye.com)

Web: [www.extra-eye.com](http://www.extra-eye.com)