

extraeye – desk bench

The Best First Article Inspection Solution.

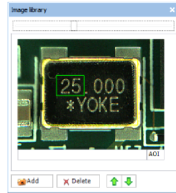
What is **extraeye**?

ExtraEye is a hardware/software system design to assist any level of Operator in the FAI process. The hardware part is a device based on a XY axis system with high quality image, capable to inspect all electronics components from top view down 01005 outlines. By presenting image of the place component with the related details from the BOM and assembly drawing ExtraEye boosts inspection speed, reduce fatigue of the personal and as result, ensure 100% inspection accuracy.

Features & Options:

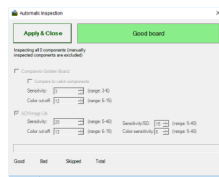
Components Library:

Save visual record of all components options.



Automatic Inspection:

Speed up time verification with automatic compare up to 1500 components in 30 sec.



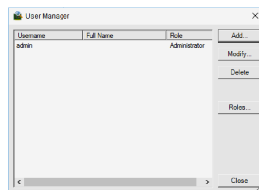
Electrical Measurements:

Use a wireless LCR to record and save components values.



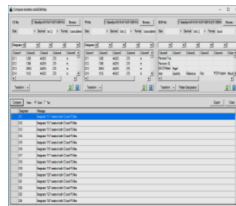
User Managements:

Apply user's right's according levels of operators.



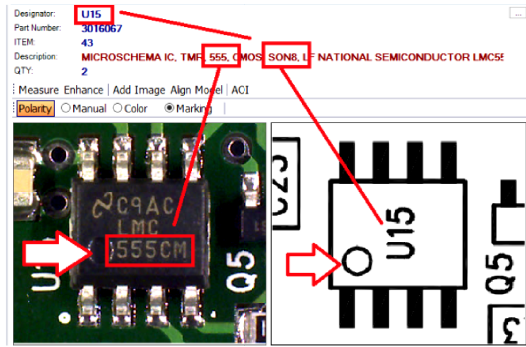
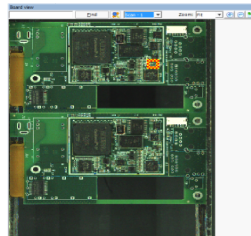
Compare BOM & INS:

Find not assign component before assembly.



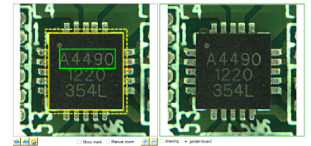
High Resolution Images:

Save all images at 1800-2100 dpi.



Golden Board

View two images from the current test and Golden Board side by side.



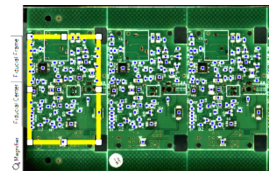
Batch Inspection:

Approve all from the same in one click.



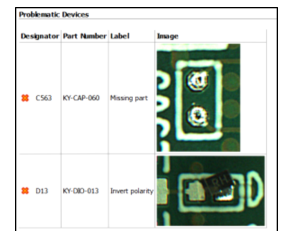
Array The Board:

Automatically apply panel's board.



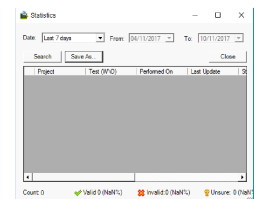
Detailed Report:

Manage by email, save & print process with high detail's report images.



SPC:

Control data and production.



System Requirements:

PC 64 bit.
 Processor Intel core i5 (or higher)
 HD 250-500GB SSD
 Memory minimum 8GB RAM (16 GB for EE X4040)
 Windows 10
 Recommended 24" high resolution wide monitor or larger.



Models:	X3040	X4040
Max Board size	380 x 450 mm	500 x 540 mm
Max Board Height	50 mm	50 mm
Power	100-220 VAC 20W	100-220 VAC 20W
External size mm	680x575x380mm	770x730x380mm
Weight kg	28 kg	33kg
Telecentric Lens	X3040T	X4040T

Contact us :

extraeye

Email: support@extra-eye.com

Web: www.extra-eye.com