

dynamic
BIOSENSORS

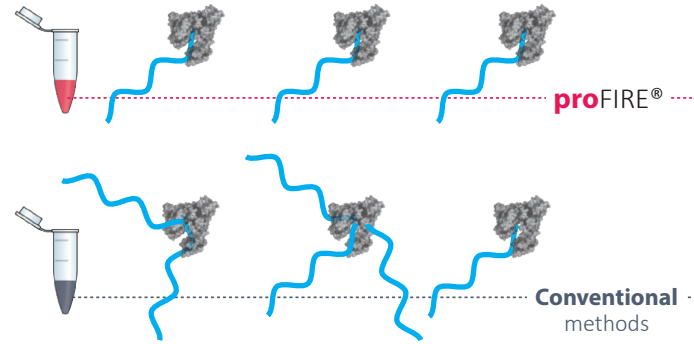


proFIRE®

PURE protein-DNA

CONJUGATES

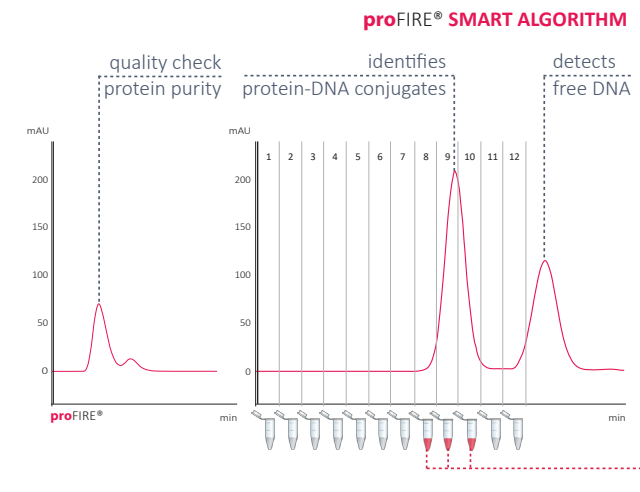
Imagine an **effortless workflow** for the preparation, purification, and analysis of protein-DNA conjugates



The **proFIRE®** solution provides you with simply pure protein-DNA conjugates. The unique system delivers consistent and superior conjugate quality for your experiment.

Conventional methods yield heterogenous mixtures of often ill-defined conjugates.

Software designed for **intuitive** protein-DNA conjugate analysis

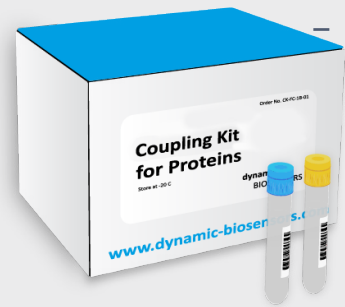


COMPOSITION		QUANTITATIVE	
In %		concentration, volume, amount	
Conjugate 1	94 %	Composition of Pooled Fractions	Pooled Fractions 8 + 9 + 10
Conjugate 2	3 %		
Free DNA	2 %	Volume 1.8 mL	
Residual	1 %		
Conjugate 1	Amount 970 pmol	Concentration 540 nM	
Conjugate 2	Amount 30 pmol	Concentration 20 nM	

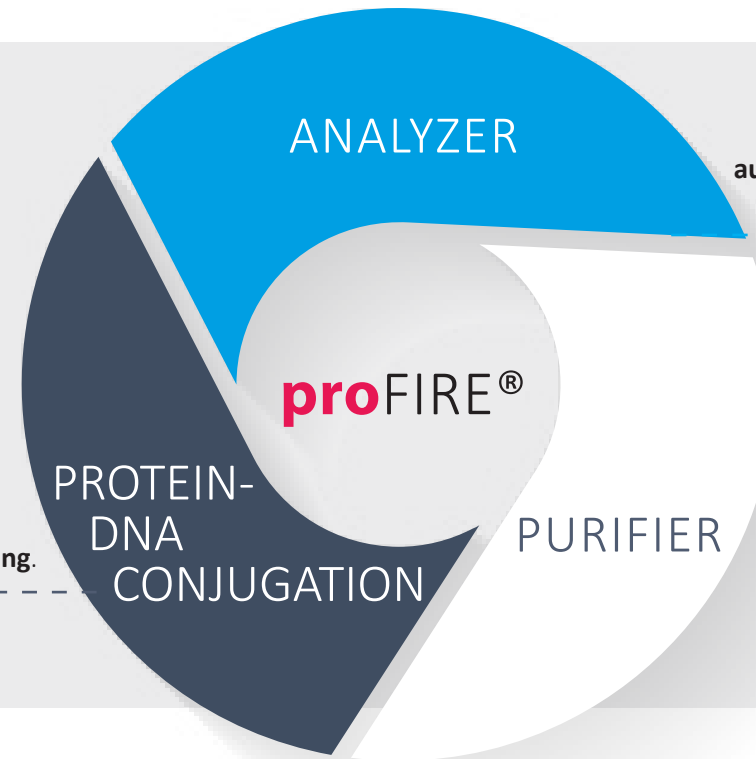
FRACTION SELECTION to your requirements

The **proFIRE®** solution for **pure** protein-DNA conjugates

proFIRE® is a **unique system for protein-DNA conjugate preparation**, delivering consistent and superior conjugate quality for your experiments.



proFIRE® coupling reagents and ready-to-use protocols for **intuitive** and **simple handling**.



proFIRE® software for **automatic recognition** and **quantitation** of conjugates.

proFIRE® **high-performance purification** and fraction collection system.



Unmatched Ease-of-Use

proFIRE® tablet-based software allows real-time monitoring of your conjugate purification.

proFIRE® optimized injection port geometry improves and facilitates sample loading.

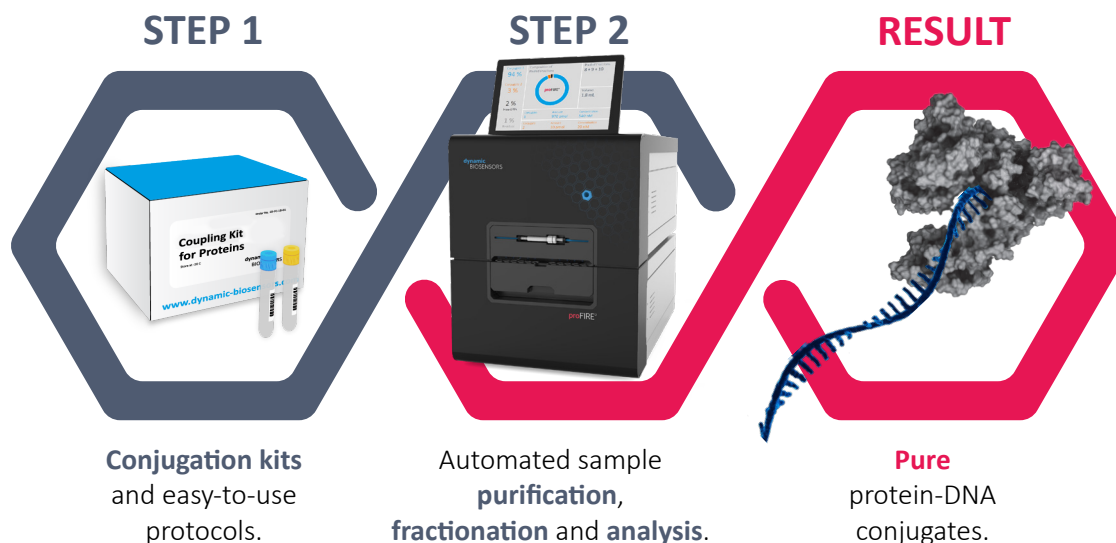
proFIRE® portable fraction collector for easy sample handling.



CONFIDENCE in your reaction products

straightforward **SCIENTIFIC RESULTS**

The **proFIRE**[®] workflow –
2 steps to results



proFIRE[®] INSTRUMENT SPECIFICATIONS

DNA length	10 – 150 nt
Protein molecular weight	5 – 500 kDa
Injection volume	50 – 150 µL
Number of fractions	12
Fraction volume	200 – 800 µL
Temperature range	10 – 30°C



proFIRE[®] is technically compatible with **switch**SENSE[®] instruments DRX & DRX².

Contact info@dynamic-biosensors.com to speak to our application team about methodologies or to arrange a demonstration.

switchSENSE[®] and **proFIRE**[®] are bioanalytical technologies by Dynamic Biosensors. Instruments, biochips, and kits are engineered and manufactured in Germany.

dynamic
BIOSENSORS

Munich DE | San Diego, CA USA | Betchton UK | Tokyo JP | Singapore SG