

Empower Inventory Viewer

Comprehensive automatic inventory mapping tool for your Empower Enterprise



VIEW YOUR EMPOWER ENTERPRISE IN A NEW WAY

Obtain fast and accurate visibility to critical information such as driver versions, firmware versions, serial numbers, configuration, and status for each system. Empower™ Inventory Viewer allows you to view a visual map of the systems and modules that are installed on your Empower Enterprise so that a clear overview can be displayed when planning upgrades or changes to your Empower environment.

DATA VIEWER

The Empower Inventory Viewer is made up of two components: a data collector and a data viewer which decrypts the information gathered from your installed Empower Enterprise environment. It is designed to accurately display information for your Empower nodes and systems in one place from across the entire network – with no manual intervention.

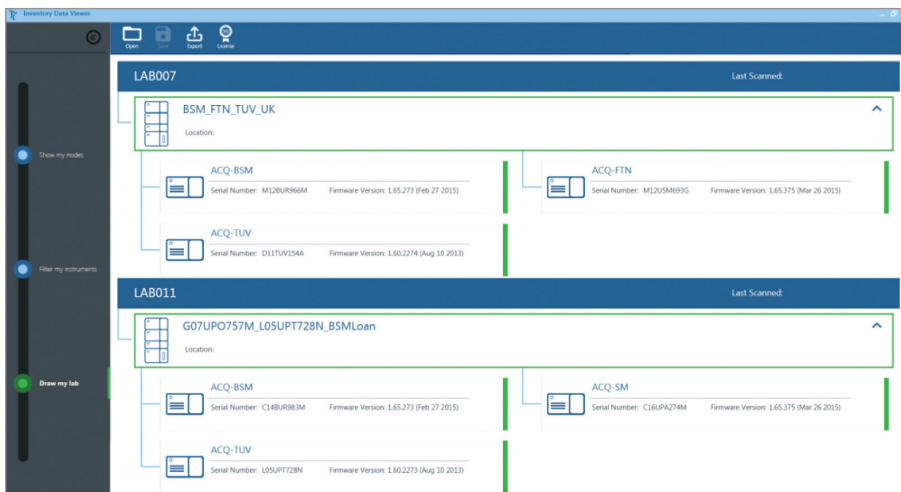


Figure 1. The Inventory Data Viewer, Draw my Lab view.



Save time in both data collection and subsequent checking with Empower Inventory Viewer.

BENEFITS

- **Easy installation**
Quickly get up and running with simple configuration
- **Advance planning**
The Empower Inventory Viewer can assist with your next expansion, system wide update, or technology upgrade
- **Save time**
No more searching for instruments during inventory
- **Automatic data updates**
Easily configurable for scheduled updates to ensure data is not obsolete
- **Multiple views of data**
Allows you to see your network as tabulated data or as a graphical representation
- **Independent of Empower release cycle**
Supports Empower 3 FR2 and above
- **Simultaneous data viewing**
Multiple users can use their own Inventory Viewer to view encrypted information simultaneously

SHOW MY NODES

The Show my Nodes dashboard displays information about each LAC/E box installed on your network.

Key features:

- See all modules and installed firmware connected to each node
- Node name
- Last boot time
- BIOS version
- Total/available RAM
- Domain
- Hotfix install count
- Empower version
- Service and Feature Release tracking
- Support Plan identification

#	Node Name	Node Status	Last Scanned	OS Name	OS Version	OS Manufacturer	OS Configuration
1	ETSCEMPSRV	Online	1/24/2018 5:52:42 AM	Microsoft Windows Server 2008 R2 Standard	6.1.7601. Service Pack 1 Build 7601	Microsoft Corporation	Microsoft Windows Server 2008 R
2	LAB004	Online	1/24/2018 5:52:42 AM	Microsoft Windows 7 Professional	6.1.7601. Service Pack 1 Build 7601	Microsoft Corporation	Microsoft Windows 7 Professiona
3	LAB001	Online	1/24/2018 5:52:42 AM				
4	LAB039	Online	1/24/2018 5:52:42 AM	Microsoft Windows 7 Professional	6.1.7601. Service Pack 1 Build 7601	Microsoft Corporation	Microsoft Windows 7 Professiona
5	LAB042	Online	1/24/2018 5:52:42 AM	Microsoft Windows 7 Professional	6.1.7601. Service Pack 1 Build 7601	Microsoft Corporation	Microsoft Windows 7 Professiona
6	LAB043	Online	1/24/2018 5:52:42 AM	Microsoft Windows 7 Professional	6.1.7601. Service Pack 1 Build 7601	Microsoft Corporation	Microsoft Windows 7 Professiona
7	LAB007	Online	1/24/2018 5:52:42 AM	Microsoft Windows 7 Professional	6.1.7601. Service Pack 1 Build 7601	Microsoft Corporation	Microsoft Windows 7 Professiona
8	LAB006	Offline					
9	LAB008	Offline					
10	LAB012	Online	1/24/2018 5:52:42 AM				
11	LAB009	Offline					
12	LAB011	Online	1/24/2018 5:52:42 AM	Microsoft Windows 7 Professional	6.1.7601. Service Pack 1 Build 7601	Microsoft Corporation	Microsoft Windows 7 Professiona
13	LAB020	Online	1/24/2018 5:52:42 AM				
14	LAB017	Online	1/24/2018 5:52:42 AM				
15	LAB027	Online	1/24/2018 5:52:42 AM				
16	LAB021	Online	1/24/2018 5:52:42 AM				
17	LAB022	Offline					
18	LAB040	Online	1/24/2018 5:52:42 AM	Microsoft Windows 7 Professional	6.1.7601. Service Pack 1 Build 7601	Microsoft Corporation	Microsoft Windows 7 Professiona
19	EMF3	Offline					
20	LAB041	Offline					

Figure 2. The Show my Nodes dashboard provides the details of each LAC/E server, including its location, support plan ID, Service and Feature Release updates, and much more.

FILTER MY INSTRUMENTS

Utilizing a filter, you can select your entire Empower Enterprise or a single instrument depending on the information needed.

Key features:

- Module information
- Acquisition server connection name
- Number of modules in each system
- Installed firmware version
- Serial number
- System status
- Instrument name
- Communication category (IEEE or Ethernet)
- Last/Next service date
- Installed location

#	Acquisition Machine Name	System Name	System Status	Number of Modules	Instrument Name	Instrument Status	Last Scanned	Node Status
11	Lab042	BSM_G07UPB819M_Spain	OFFLINE	4	ACQ-CM	No	1/24/2018 5:52:42 AM	Online
12	Lab042	BSM_G07UPB819M_Spain	OFFLINE	4	ACQ-TUV	No	1/24/2018 5:52:42 AM	Online
13	Lab042	BSM_G07UPB819M_Spain	OFFLINE	4	ACQ-BSM	No	1/24/2018 5:52:42 AM	Online
14	Lab043	KAB1838	ONLINE	3	ACQ-QDA	Yes	1/24/2018 5:52:42 AM	Online
15	Lab043	KAB1838	ONLINE	3	ACQ-FTN	Yes	1/24/2018 5:52:42 AM	Online
16	Lab043	KAB1838	ONLINE	3	ACQ-QSM	Yes	1/24/2018 5:52:42 AM	Online
17	Lab007	BSM_FTN_TUV_UK	ONLINE	3	ACQ-BSM	Yes	1/24/2018 5:52:42 AM	Online
18	Lab007	BSM_FTN_TUV_UK	ONLINE	3	ACQ-FTN	Yes	1/24/2018 5:52:42 AM	Online
19	Lab007	BSM_FTN_TUV_UK	ONLINE	3	ACO-TUV	Yes	1/24/2018 5:52:42 AM	Online

Figure 3. The Filter my Instruments dashboard allows you to select specific instruments, or your entire network. Here you will be able to see each system's configuration and detailed module information including firmware, serial numbers, and node connections.

DRAW MY LAB

Create a graphical representation of all instrument systems which are installed within the Empower Enterprise domain.

Key features:

- Graphical network map that is able to be exported in Adobe Acrobat or JPEG formats
- Changes to the validated installed configuration of Empower are also identified

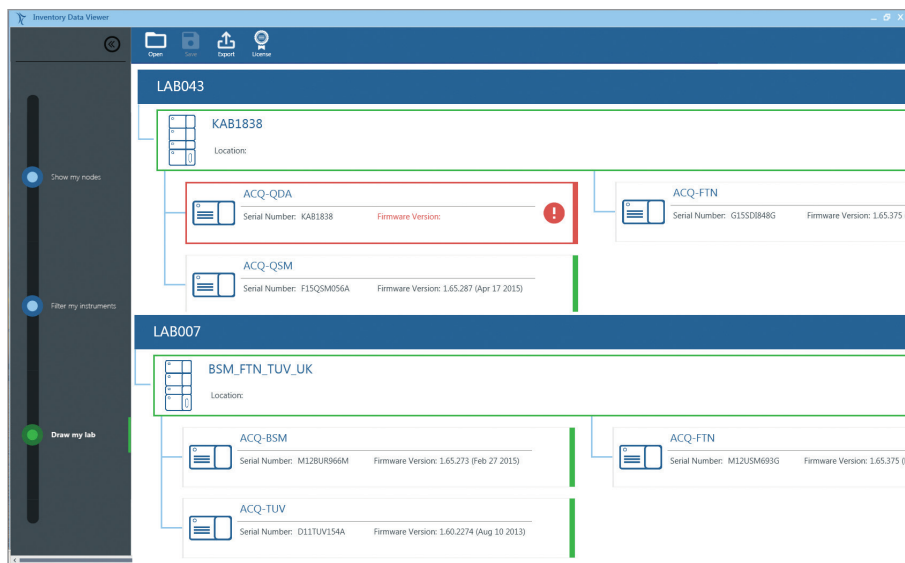


Figure 4. The Draw my Lab dashboard provides a visual report of each system’s status, configuration, and basic module information. It can be exported as an image file or in Adobe Acrobat format.

DATA COLLECTOR

The Data Collector is installed on a client within your Empower Enterprise and communicates with the Empower database to collect the necessary data from your instrument systems. It works in the background to gather the details of each node, system and module on your Empower Enterprise and is stored as an encrypted file to be used by the Data Viewer.

CONFIGURATION

The Data Collector Configuration page is designed for your Empower Administrator or Waters Professional Service Consultant to make the necessary connections and any adjustments to the Empower Enterprise.

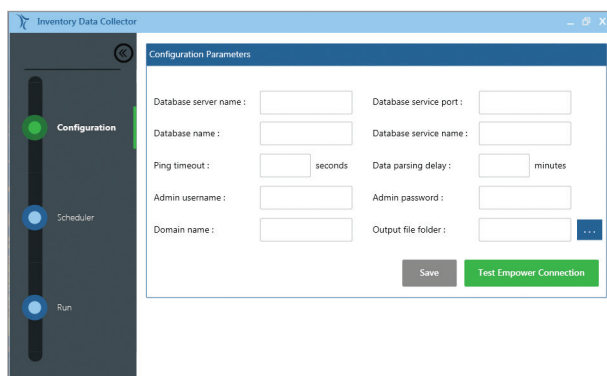


Figure 5. Your unique Empower Enterprise connections are made here and configured for your network.

SCHEDULER

The information from your Empower Enterprise can be generated at a frequency or on a schedule of your choosing to monitor any changes or updates, allowing you to focus on your daily lab operations.

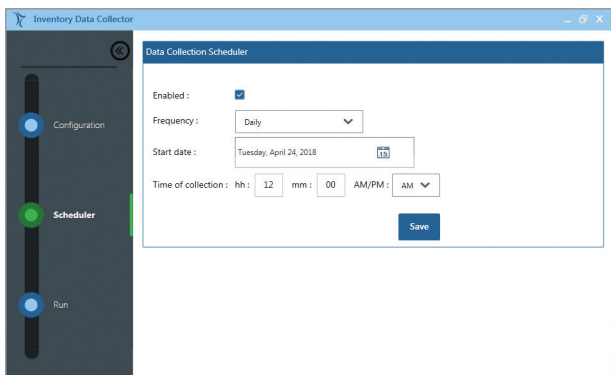


Figure 6. As an option, you are able to determine the frequency of data collection from your Empower Enterprise and store the information in an offline folder for future review.

- All of the data is presented in the local language of the Empower instance.
- Empower Inventory Viewer is intended to support all Enterprise instances of Empower 3 FR2 and forward. It will run on Windows 7 and 10 operating systems.
- The Empower Inventory Viewer has been developed under the control of the Waters Software Development Lifecycle and utilizing GAMP5 guidelines.

WATERS GLOBAL SERVICES

Delivering world renowned services and support

Waters Service and Support offerings are tailored to optimize your laboratory productivity while addressing your budget realities. Our offerings help maintain system peak performance, minimize down time, address scientific application challenges, and support stringent compliance requirements. As your services and support provider, we are committed to the success of your laboratory and business.

Waters quality support and consultative services ensure your success wherever your laboratory is located in the world.



Waters has consecutively earned the ACE Award since 2001 for providing best-in-class technical knowledge, issue resolution, and process support.

Waters

THE SCIENCE OF WHAT'S POSSIBLE.™

Waters, The Science of What's Possible, and Empower are trademarks of Waters Corporation. All other trademarks are the property of their respective owners.

©2018 Waters Corporation. Produced in the U.S.A. June 2018 720006300EN LM-PDF

Waters Corporation
34 Maple Street
Milford, MA 01757 U.S.A.
T: 1 508 478 2000
F: 1 508 872 1990
www.waters.com