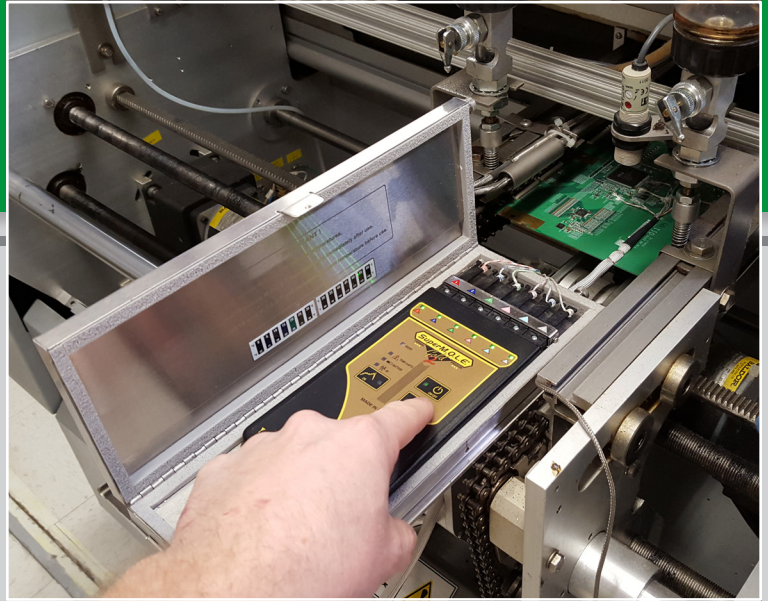


# SuperM.O.L.E.™ Gold 2

SMARTEST PROFILER ON THE PLANET



SuperM.O.L.E.™ Gold 2 is a value-packed thermal profiling workhorse most often relied upon for in-transit thermal profiling work. With the world renowned SuperM.O.L.E.™ Gold pedigree, ECD advances the state-of-the-art with 3, 6 and 20-channel Mega platform model choices, and 6-channels is most often specified for process development, R&D and Validation with WaveRIDER™ NL 2 & OvenRIDER™ NL 2+.

[WWW.ECD.COM/SMG2](http://WWW.ECD.COM/SMG2)

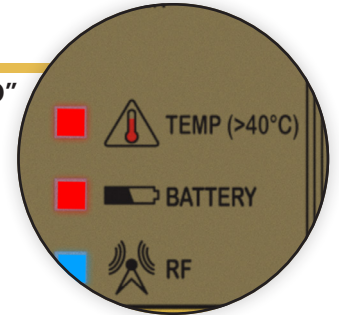
A large collage of images. At the top left is a green PCB. In the center is a SuperM.O.L.E. Gold 2 profiler with its screen open, showing the software interface. To the right is a circular diagram with four segments: 'PROCESS DEVELOPMENT &amp; VALIDATION' (top left), 'MACHINE QUALITY MANAGEMENT' (top right), 'USER INTERFACE ANALYSIS &amp; OPTIMIZATION' (bottom left), and 'COMPONENT DRY STORAGE' (bottom right). The center of this diagram is the ECD logo with 'SINCE 1984' below it. At the bottom are five circular icons: 'ELECTRONICS' (green), 'BAKING' (brown), '3D/ADDITIVE' (purple), 'SOLAR' (orange), and 'INDUSTRIAL' (red). The background of the collage is a light-colored grid with various text elements like 'Zone 1', 'Zone 2', 'Zone 3', 'Time Above Temperature', and 'Add Extra'. In the bottom right corner, there is an American flag and the text 'Made in USA'.



# FEATURES

## PROTECT YOUR TIME AND PROFILER

- Know critical systems are "GO" before you thermal profile



## AUTO-DETECT

- Thermal Profiler automatically recognizes the RIDER™ NL 2 series process test pallets

## OK BUTTON

- Operator gets GO/NO-GO decision control
- Improves productivity
  - Saves Time

## EASY TO USE

- Built-in Wireless Option
- USB enabled Fast Upload, Download or Charge

## LEDS SHOW T/C READINESS

- No wasted data runs
- At a glance open thermocouple indicators

## NEVER LOSE A THERMAL PROFILE

- Separate On/Off and Record buttons
- Prevents lost profiles

## 1.5 MILLION DATA POINT MEMORY

- 96 thermal profile storage lets you download on demand



## M.O.L.E.™ MAP SOFTWARE

- Download and analyze the data with the ECD award winning software.

# SUPERM.O.L.E.™ GOLD 2 SYSTEM

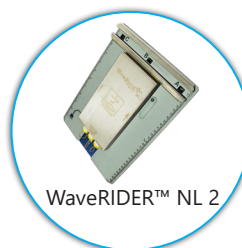
[ECD P/N: E51-0386-00]



## SYSTEM INCLUDES:

- SuperM.O.L.E.™ Gold 2 Profiler (w/integrated battery)
- 1.0" Uni-Barrier stainless steel Thermal Barrier
- Yellow Jacket Thermal Barrier Cover
- Glass set of 6 Color-Indexed 36-gauge Thermocouples
- M.O.L.E.™ MAP Software
- PC USB 2.0 Cable (Set-up & Download)
- Universal Power Pack Charger
- Quick Reference Guide
- Carrying Case

**Integrates with all ECD RIDERS for  
scalable machine quality management**



*Engineering Process Control Solutions for Over 50 years*

# SPECIFICATIONS

## THERMOCOUPLE SENSORS

Up to 6 Type K ECD Micro-Thermocouples

## COMMUNICATIONS

Interface: USB Compliant (charge;upload;download)  
Cable: USB Type A, Male-to-Mini B, 5 pin Male, 1m (3')

## DATA ACQUISITION

Sampling Interval: 0.1 seconds to 24 hours  
Data points: 250,000 for all 6 channels  
Data runs stored: 96 (Standard Thermal Profiles)  
Accuracy: +/- 1°C (1.8°F)  
Resolution: 0.056°C (0.1°F)  
Measurement range: -200°C to 1271°C (-328°F to 2320°F)

## POWER

Battery: Lithium Polymer - Rechargeable, 340mAh  
Charge Protection: optimized for lithium polymer  
Charge time:

- Full: 8 hours
- Partial: 15 min. charge allows one 10min. data run

Charge Capacity:

- 50 ten minute data runs\*

Battery Life: 300-400 charging cycles or 3 years (Minimum)  
Charger input current: 175 ma via USB Interface  
Operating Range: 4.2V to 3.2V

\*New, fully charged Power Pack.

## PHYSICAL

Dimensions (L x W x H):

- Profiler: 152.4mm (6") x 89mm (3.5") x 9.41mm (0.37")
- Barrier: 269.7mm (10.62") x 104mm (4.1") x 26.9mm (1.06")
- Yellow Jacket: 286.5mm (11.28") x 115mm (4.53") x 32.5 (1.28")

Weight:

- Profiler: .204 kg (7.2 oz)
- Barrier: .861 kg (30.4 oz)
- Yellow Jacket: 0.07 kg (2.4 oz)

Operational range (Profiler): -40°C to +85°C (-40°F to 185°F)

Humidity: 0-85% RH (Non Condensing)

## COMPLIANCE



## PATENT

Patent No. 7,653,502

## WARRANTY

2 years parts and labor

## WEBSITE

[WWW.ECD.COM](http://www.ecd.com)



**ECD WORLD HEADQUARTERS**  
(North America - US, Canada)  
4287-B SE International Way  
Milwaukie, Oregon 97222 U.S.A.  
Tel: +1 800 323 4548  
E-Mail: sales@ecd.com  
Web: www.ecd.com

**APAC**  
(Asia-Pacific, China, India)  
Singapore Office  
Mobile: +65 9692 6822  
E-Mail: ecd.asia@ecd.com

**EMEA**  
(Europe, Middle East, Africa)  
UK Office  
Mobile: +44 (0) 7903 252560  
E-Mail: ecd.europe@ecd.com

**LATAM**  
(Mexico, Central, South America)  
Houston, TX U.S.A. Office  
Phone: +1 503 659 6100 x250  
Mobile: +1 832 533 0046  
E-Mail: ecd.latam@ecd.com

• Award winning products, service & software • No-cost ECD Online Training •

Accredited Lab



Member of



Awards



Social Networks

