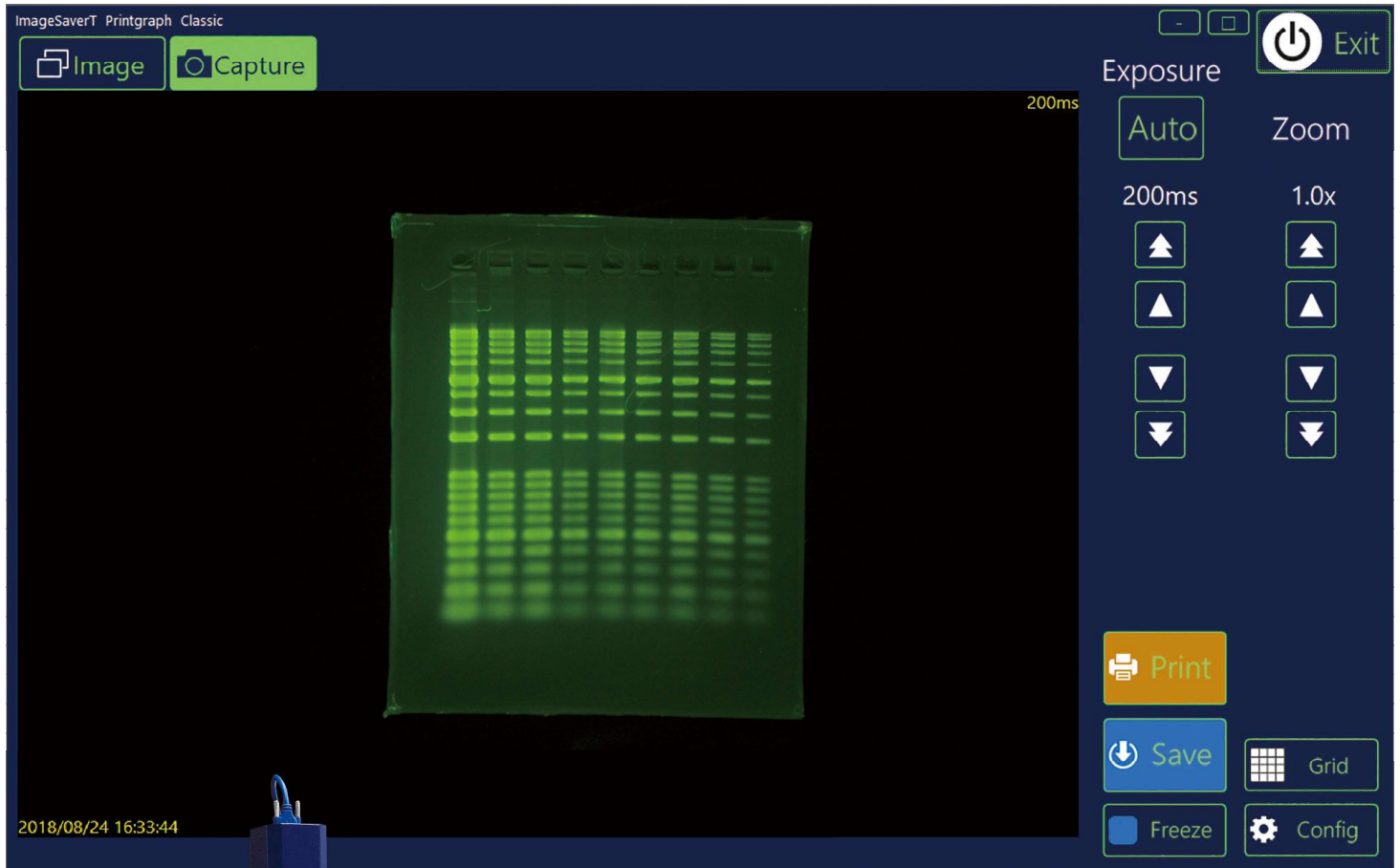


WSE-5400 Printgraph Classic



ATTO has been sold Printgraph series 4000 units!
New released Printgraph series 「Classic」 !

High-Resolution 「Printgraph Classic」

NEW

**3M Pixels Color CMOS Camera ! New Printgraph Series !
「WSE-5400 Printgraph Classic」**

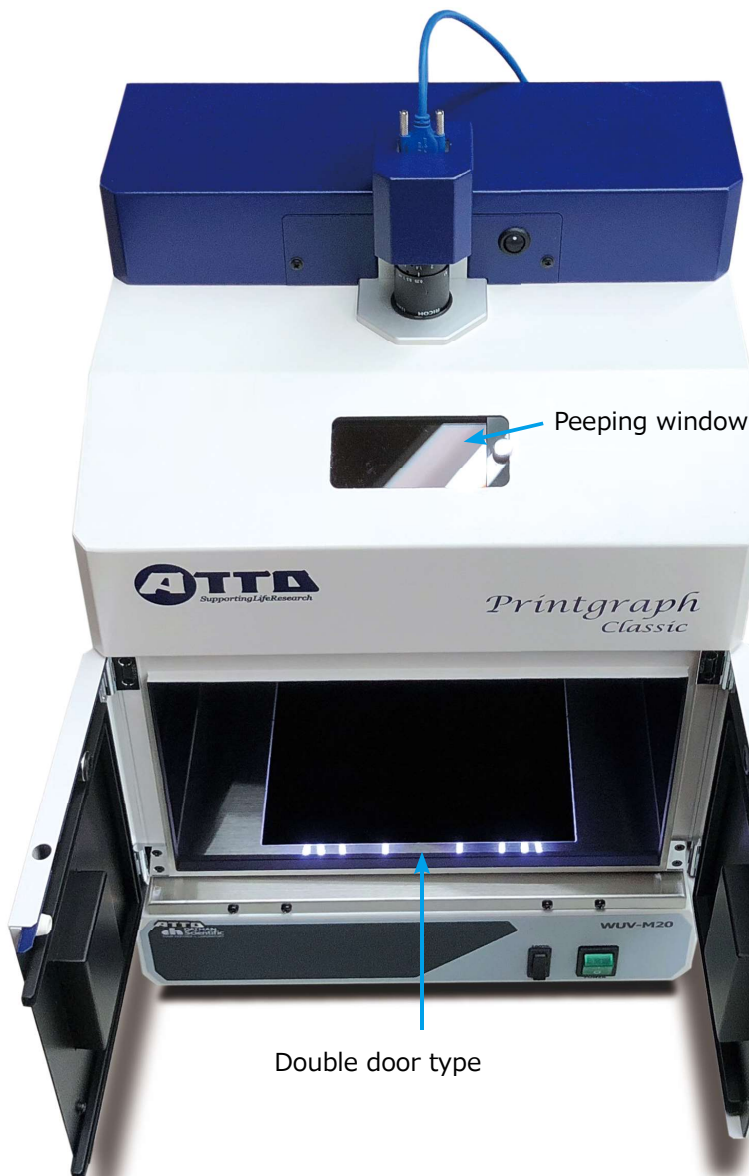
Name is 「Classic」 but applied new technology !

「WSE-5400 Printgraph Classic」 is High resolution **3M pixels color CMOS camera applied** with independent intouch panel control and connect with PC control. Detecting by UV light source which DNA (EtBr) and detection CBB pattern with ATTO original "Flat Viewer" white LED light source. Save an image to USB memory directly. Connect with UP-X898MD thermal printer for direct print out immediately. Touch LCD system has sleep mode and you can restart it with slight touching on screen.



Cabinet is designed to cutting gel work for cloning.

Convenient operation with touch LCD system



Peeping window

Double door type

Double door dark room design for cloning

「WSE-5400 Printgraph Classic」 is designed for cloning which can do gel cutting to open cabinet door with peeping window. Peeping window can protect your eyes from UV light.



Quick restart



Touch "Sleep mode screen"
 → Pop up "Start"
 → Touch "Start" to restart !

「WSE-5400 Printgraph Classic」

Slightly touch "Touch LCD system" screen and you can restart this system immediately.

If you do not use this system, it would be turned to sleep mode screen.

Connect with PC

「WSE-5400 Printgraph Classic」

If you connect with PC, you can use ATTO original control software "ImageSaverT".

Also, you can connect PC mouse to touch system, you can use it such PC contoler.



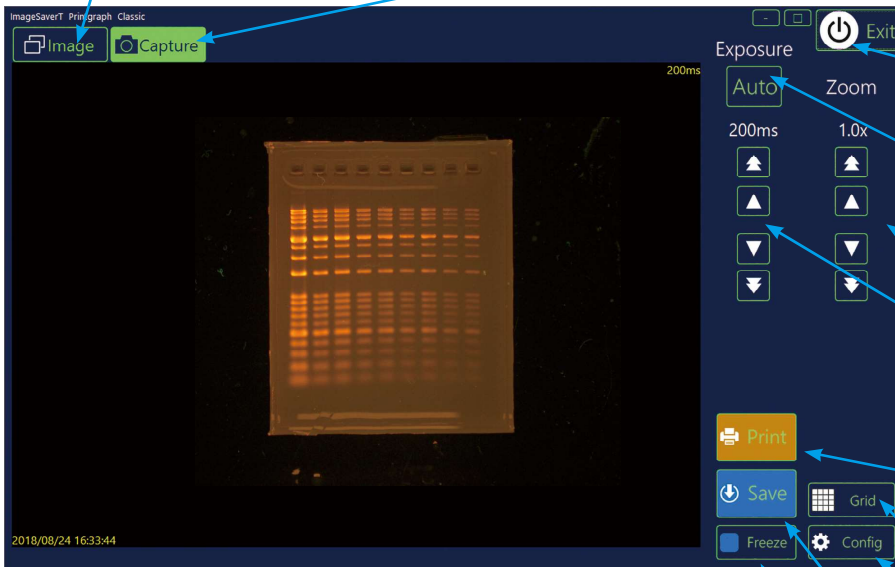
Operation

「Image」

Saving an image · image select

「Capture」

Capture mode



「Exit」

Be sleep mode/re-start with touching on monitor

「Auto」

Auto exposure time adjustment
 Exposure time : 1msec ~ 10sec

「Zoom」

Zoom
 $1 \times \sim 8 \times (0.2 \times / 1 \times \text{step})$

Exposure control icon

manual up/down
 Exposure time : 1msec ~ 10sec

「Print」

Print out

「Grid」

「Config」

「Save」

Save an image to USB memory

「Freeze」

After setting a sample on tray, push on "Freeze" and turned off UV lamp in order to avoid the sample damage. Freeze mode can save an image to USB memory and print out

「Color/Monochrome switching」

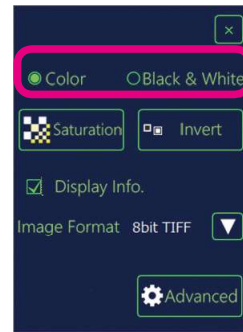
Swichable color/monochrome

Detecting mode swichable

Monochrome ⇔ Color

Other functions

- Grid
- Shows saturation detection
- Convert White&Black



Color CMOS camera images

After Agarose DNA electrophoresis,

- Ethidium Bromide stained (Red)
- EzFluoroStain DNA stained (Green)

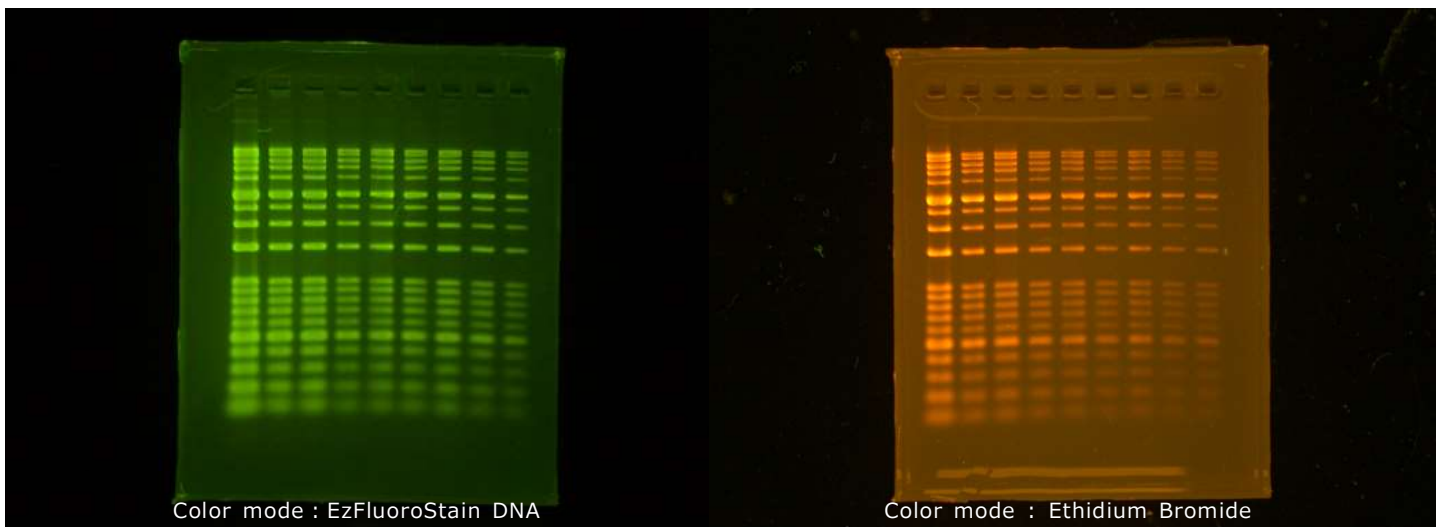
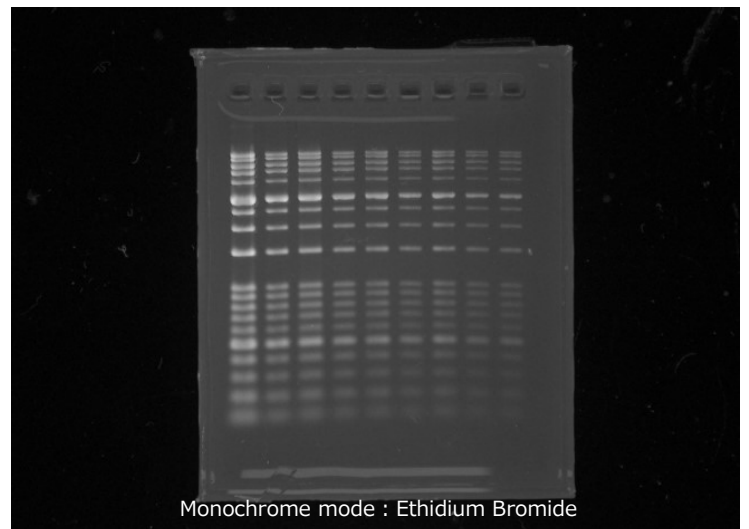
Right image is monochrome mode and

below 2 images are color mode.

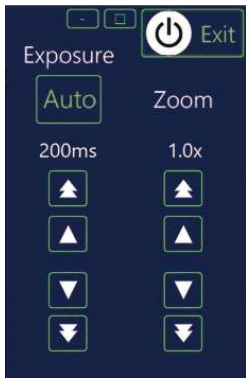
Color mode images are showing original color.

Detected images may to save with color and monochrome.

File format : TIFF/JPEG/BMP (8bit) TIFF (16bit)



「Zoom」



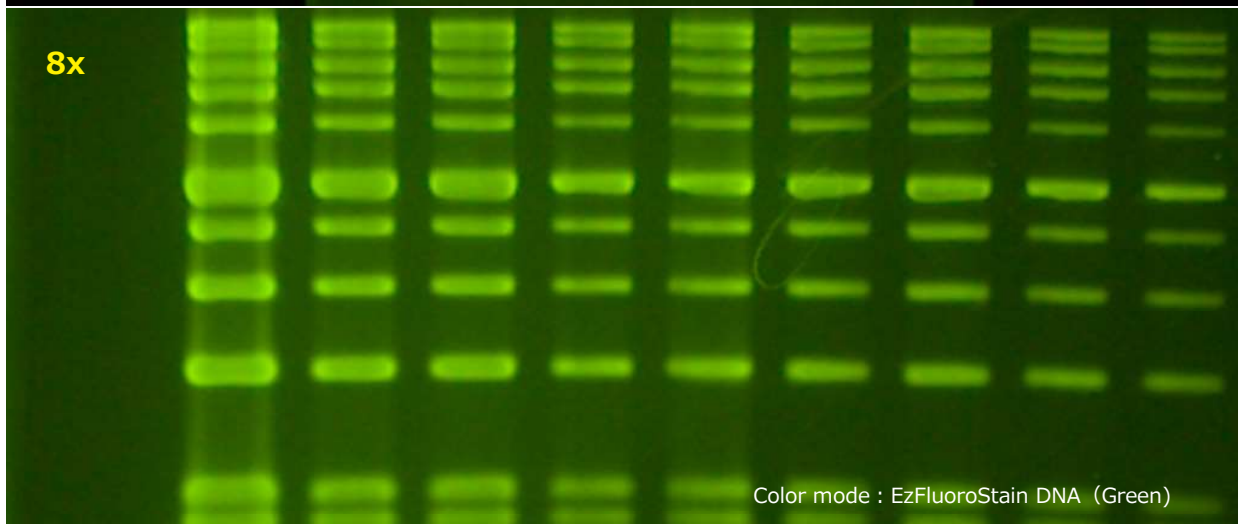
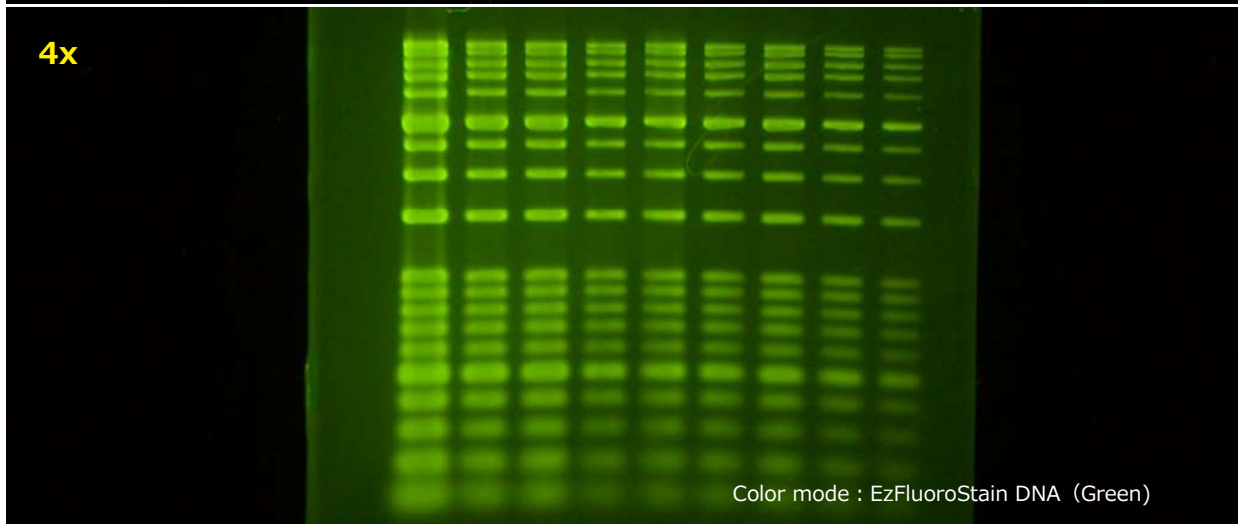
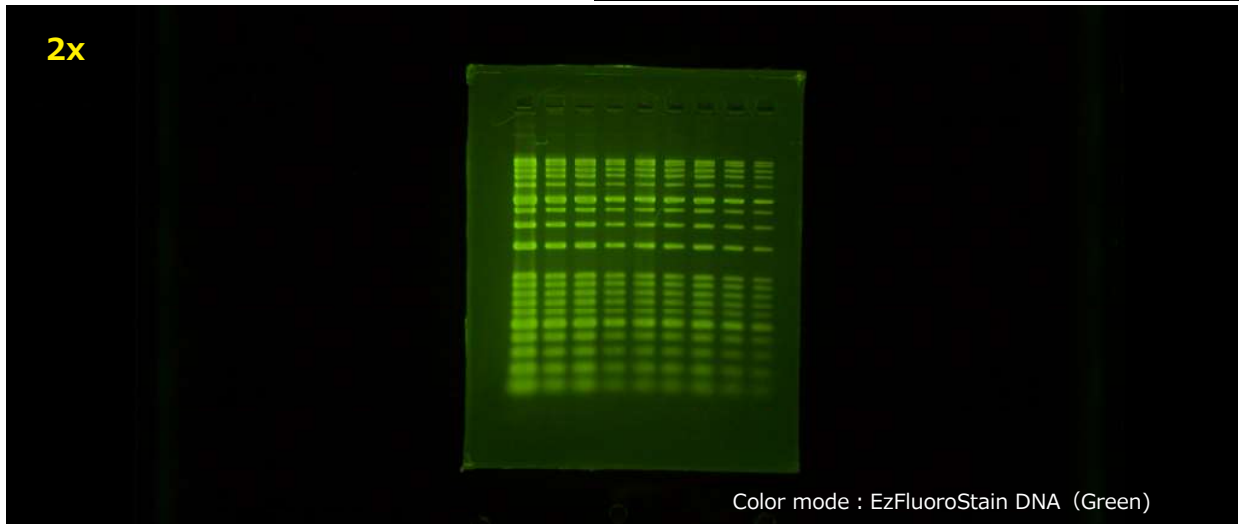
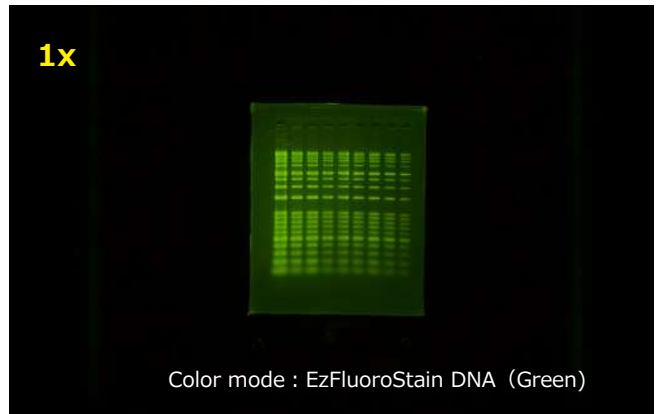
Zoom

0.2 × step / 1 × step
Scale : 1x ~ 8x

Adjust Zoom in/out through Zoom ▲▼ key

Adjusted image would be saved.

Format : TIFF/JPEG/BMP (8bit)
TIFF (16bit)



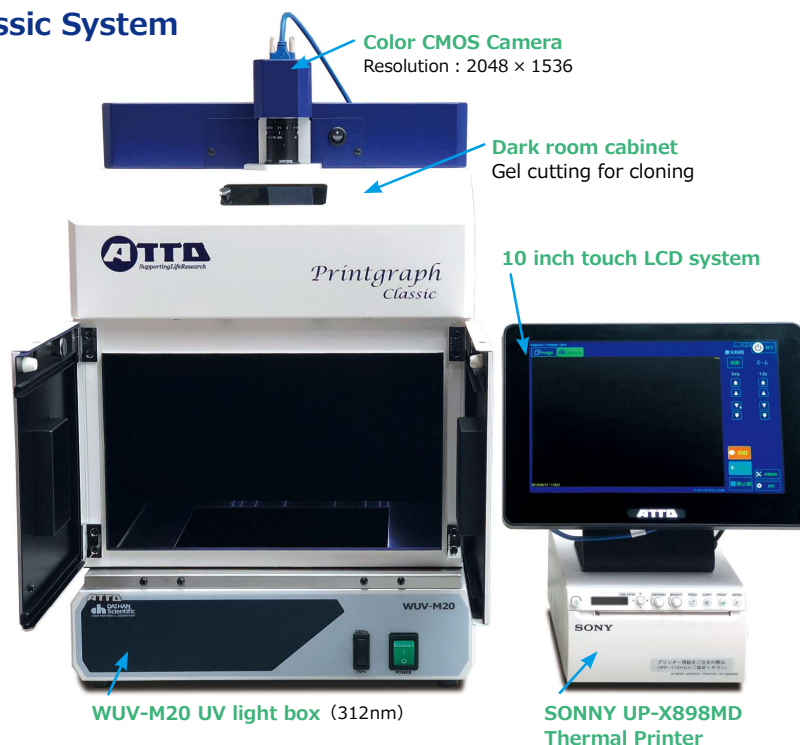
Specification

WSE-5400-UP Printgraph Classic System

Needed an installation space
: 650(W) × 300(D) × 535mm(H)

- Fluorescent staining gel (UV light)
 - ※ LED light source is option
- CBB staining gel
(White LED light source · Option)

Detected an image of electrophoresis pattern to print out directly and analyse an image with ATTO CS analyzer.







Composition	WSE-5400 Printgraph Classic
Camera	High sensitive color CMOS camera (3M pixels) High resolution : 2048×1536 Color/Monochrome switchable
Saving an data	USB Memory File Format : 8bit TIFF/BMP/JPEG 16bit TIFF
Lens	F1.4 12mm Single focal lens
Zoom	1x~x8 (Touch LCD system) x0.2 Step/x1 Step
Detecting area	25mm(W)×18mm(D)~200mm(W)×150mm(H)
Operation system	10 inch touch panel LCD
Filter	Orange filter (50mm)
Exposure time	1msec~10sec Manual/Auto
Satuation detecting	White level
Image	Convert white&Black/Grid/Color mode/Monochrome mode
Size/Weight	Cabinet : 340(W)×275(D)×437mm(H) · 9.0kg Touch system : 264(W)×150(D)×222mm(H) · 2.5kg
Power	AC100~240V 2A 50/60Hz

System Size & weight

	WSE-5400-UP	WSE-5400-P	WSE-5400-U	WSE-5400
Size (mm)	650(W) × 300(D) × 535(H)	650(W) × 300(D) × 440(H)	650(W) × 300(D) × 535(H)	650(W) × 300(D) × 440(H)
Weight (Total)	22.1kg	14.1kg	19.5kg	11.5kg
Power	204W	156W	74W	26W
System Image				

System composition

	WSE-5400-UP	WSE-5400-P	WSE-5400-U	WSE-5400
Classic Main unit	●	●	●	●
Touch LCD system (WSE-5400) (Camera control)	●	●	●	●
ImageSaver (Control software)	●	●	●	●
Printer (UP-X898)	●	●		
UV light box (WUV-M20)	●		●	
System Image				

***Connect with PC case for PC control, it needs**

2305420 WSE-5400-S

3532197 WUV-M20 UV light box

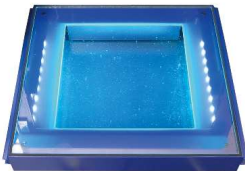
2305425 PC connection kit

2110040 ImageSaverT

WUV-M20 UV light box



WSE-5600 CyanoView



Flat Viewer



UP-X898MD

Thermal Printer



Code No.	Model name	Qt
2305420	WSE-5400-S Printgraph Classic Printgraph Classic main unit	1 unit
2305403	WSE-5400-UP Printgraph Classic Printgraph Classic main unit · Touch LCD system · UV box · Printer	1 set
2305402	WSE-5400-P Printgraph Classic Printgraph Classic main unit · Touch LCD system · Printer	1 set
2305401	WSE-5400-U Printgraph Classic Printgraph Classic main unit · Touch LCD system · UV box	1 set
2305400	WSE-5400 Printgraph Classic Printgraph Classic main unit · Touch LCD system	1 set
3532197	WUV-M20 UV light box 312nm	1 unit
2305425	PC connection kit for WSE-5400	1 set
2110040	ImageSaverT (Control software for WSE-5400)	1 pc
2305424	Filter for WSE-5400	1 pc ※1
2140202	SONY Thermal printer UP-X898MD	1 unit
2140913	Printer paper UP-110HG 10 rolls	1 pack
2008151	WSE-5600 CyanoView (Cyan LED) Unit	1 unit
2196160	Flat Viewer (White LED light source)	1 unit
2305423	Extension AC adapter for WSE-5400	1 pc ※2

※ 1 : Add Filter If you use other UV box instead of ATTO WUV-M20, it may shws UV lamp .

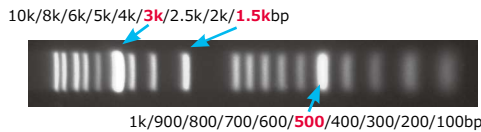
※ 2 : Need to using WSE-5600 CyanoView and Flat viewer.

Related Product

for DNA

DNA Molecular weight marker 「WSE-7030 EzDNA Ladder」

Cord No.	Model Name	Qt	Term
2332342	WSE-7030 EzDNA Ladder 500μL Molecular weight marker 10k~100bp/19 Bads	1 kit	Freezer



EzDNA Ladder is molecular weight DNA marker 19 bands for 10k~3k/1.5k/500~100bp and fitting with agarose electrophoresis. There is easy to know because molecular weight 3Kbp/1.5kbp/500bp band is high and easy to distinguish. For detection, use 「EzFluoroStain DNA」 and best detection it with 「WSE-5300 Printgraph CMOS I」.

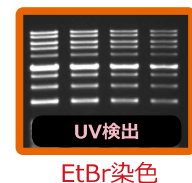
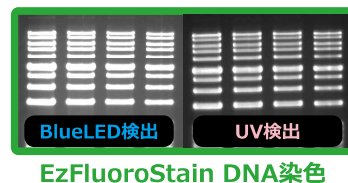
for DNA

DNA Staining Solution 「WSE-7130 EzFluoroStain DNA」

Cord No.	Model name	Qt
2332395	WSE-7130 EzFluoroStain DNA	1 kit

FLUORESCENT DYE FOR DETECTION OF DNA IN POST-ELECTROPHORESIS

Model name	EzFluoroStain DNA
Volume	500 μ L
Apply	x10000 Dilute with TAE/TBE and BlueLED detection
Safety	Lowest value by Ames test, not containing carcinogenic substance of IARC



for DNA

Agarose Gel electrophoresis 「WSE-1710 Submerge-Mini」



- Agarose gel electrophoresis system for DNA
- Analysis of PCR-amplified fragments
- Separation of nucleic acids
- 50V/100V/150V constant voltage
- 0~99min timer
- Safety: open cover error with alarmed. (LED shows E1 with alarmed)
- UV transparent gel tray
- Combs for multi-channel pipet
- 3mm, 5.8mm double edged comb

Cord No.	Model name	Qt
2322100	WSE-1710 Submerge-Mini	1 set
2322109	Gel casting kit S&L (WSE-1710)	1 set
2322108	Gel casting kit L (WSE-1710)	1 set
2322107	Gel casting kit S (WSE-1710)	1 set
2322113	Comb L (WSE-1710) 2 pcs for gel tray L	1 set
2322118	Comb S (WSE-1710) 2 pcs for gel tray S	1 set



ATTO Corporation

Providing research solutions for Biochemistry/Molecular Biology/
Genetic engineering development

Head Office: 3-2-2 Motoasakusa, Taito-ku, Tokyo, 111-0041 JAPAN

TEL: 81-3-5827-4863 FAX: 81-3-5827-6647 Email: eig@atto.co.jp

URL <http://www.atto.co.jp/>