



EHEC SOLUTION Raw milk and raw milk cheese protocol

1 Detection



25 g or 25 ml
in 225 ml Buffered
Peptone Water
+ 10mg/l acriflavine

18-24 hrs / 37 ± 1°C
0.8 ml



VIDAS® ESP1
38 min
5 µl

VIDAS® ESP1
38 min
10 µl



STEC-stx/eaе



ABSENCE



STEC-Top 6



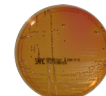
CONFIRMATION ABSENCE

2 Confirmation

0.8 ml

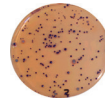


VIDAS® ESP2
38 min
2 x 30 µl



CT-SMAC

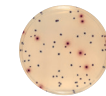
If suspected *E. coli* O157:H7
18-24 hrs / 37 ± 1°C



chromID® EHEC
18-24 hrs / 37 ± 1°C



OR



chromID® Coli

If suspected non-O157:H7 EHEC
22-26 hrs / 37 ± 1°C

1 to 5 typical colonies per agar



SLIDEX® E. coli

Corresponding to targeted serogroup(s)



STEC-stx/eaе

EHEC range

REF 30229	VIDAS® UP <i>E. coli</i> Serogroups (ESPT) 60 tests
REF 42043	BPW 6 x 225 ml
REF 414153	GENE-UP® STEC-stx/eaе 192 tests
REF 414154	GENE-UP® STEC-Top 6 24 tests
REF 42729	BPW 10 x 225 ml (Minibags)
REF AEB610309L	BPW 6 x 900 ml
REF AEB910303/4	BPW 4 x 3 L (DILUBAG™)
REF AEB910305/2	BPW 2 x 5 L (DILUBAG™)
REF 413697	ChromID® EHEC agar 6 x 200 ml
REF 413093	ChromID® EHEC agar 5 x 20 ml
REF 42606	Cefixime-Tellurite Mixture (CT) 6 x 4 ml
REF 42017	ChromID® Coli agar 6 x 200 ml
REF 43391	SMAC CT agar 20 plates
REF 417404	SLIDEX® <i>E. coli</i> O26 50 tests
REF 417403	SLIDEX® <i>E. coli</i> O103 30 tests
REF 417485	SLIDEX® <i>E. coli</i> O111 30 tests
REF 417406	SLIDEX® <i>E. coli</i> O121 30 tests
REF 417405	SLIDEX® <i>E. coli</i> O145 50 tests
REF 417407	SLIDEX® <i>E. coli</i> O157 50 tests
REF 421195	SLIDEX® <i>E. coli</i> O45 30 tests



EHEC SOLUTION

Raw beef and veal – 25 g and 50 to 375 g protocols / Produce - 200 g protocol

1 Detection

25 g in 225 ml prewarmed Buffered Peptone Water
8-24 hrs / 41.5 ± 1°C
0.8 ml

50 to 375 g in 150 to 1125 ml prewarmed Buffered Peptone Water
10-24 hrs / 41.5 ± 1°C
0.8 ml

200 g in 800 ml Buffered Peptone Water
10-24 hrs / 41.5 ± 1°C
0.8 ml

VIDAS® ESP1
38 min
5 µl

VIDAS® ESP1
38 min
10 µl

STEC-stx/eae



ABSENCE

STEC-Top 6



CONFIRMATION ABSENCE

EHEC range

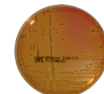
REF 30229	VIDAS® UP E. coli Serogroups (ESPT) 60 tests
REF 42043	BPW 6 x 225 ml
REF 414153	GENE-UP® STEC-stx/eae 192 tests
REF 414154	GENE-UP® STEC-Top 6 24 tests
REF 42729	BPW 10 x 225 ml (Minibags)
REF AEB610309L	BPW 6 x 900 ml
REF AEB910303/4	BPW 4 x 3 L (DILUBAG™)
REF AEB910305/2	BPW 2 x 5 L (DILUBAG™)
REF 413697	ChromID® EHEC agar 6 x 200 ml
REF 413093	ChromID® EHEC agar 5 x 20 ml
REF 42606	Cefixime-Tellurite Mixture (CT) 6 x 4 ml
REF 42017	ChromID® Coli agar 6 x 200 mL
REF 43391	SMAC CT agar 20 plates
REF 417404	SLIDEX® E. coli O26 50 tests
REF 417403	SLIDEX® E. coli O103 30 tests
REF 417485	SLIDEX® E. coli O111 30 tests
REF 417406	SLIDEX® E. coli O121 30 tests
REF 417405	SLIDEX® E. coli O145 50 tests
REF 417407	SLIDEX® E. coli O157 50 tests
REF 421195	SLIDEX® E. coli O45 30 tests

2 Confirmation

0.8 ml

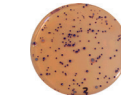


VIDAS® ESP2
38 min
2 x 30 µl



CT-SMAC

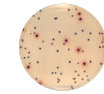
If suspected *E. coli* O157:H7
18-24 hrs / 37 ± 1°C



chromID® EHEC
18-24 hrs / 37 ± 1°C

+

OR



chromID® Coli

If suspected non-O157:H7 EHEC
22-26 hrs / 37 ± 1°C

1 to 5 typical colonies per agar



SLIDEX® E. coli

Corresponding to targeted serogroup(s)



STEC-stx/eae