



# Compression Tester

## Model 17-76



### FEATURES

- Load capacity 1000 LB (4448 N)
- Platen size 7 x 7 in (178 x 178 mm)
- Test speed 0.2 - 20 in/min (5.08-508 mm/min)
- Return speed 10 in/min (254 mm/min)
- Color LCD display
- Menu-driven software
- Test results and statistics are displayed on screen
- Preset keys for all relevant tests
- Automatic fast return platen saves testing time
- Pre-programmed with 3 languages
- 8 corrugated test methods for quick access
- Measuring units: N, N/m<sup>2</sup>, lb, lb/in<sup>2</sup>, kg, or kg/m<sup>2</sup>
- RS232C serial data output
- Built-in printer
- Compatible with GraphMaster™ software

### APPLICATIONS

Corrugated, Tubes and Cores, Bottles and Cans, Flexible Packaging, Plastic Products, Building Products

### OPTIONAL OPENINGS

8, 16 and 24 inch

### OPTIONAL ACCESSORIES

- 22-76 Sample cutter
- Sample holders for RCT, CCT, ECT and SQT (see reverse)

Designed in close cooperation with industry, the 17-76 Compression Tester is rugged enough for any production testing environment. Utilizing intuitive hardware features and menu-driven software, the 17-76 is designed to provide highly accurate measurement of compressive strength for a variety of materials.

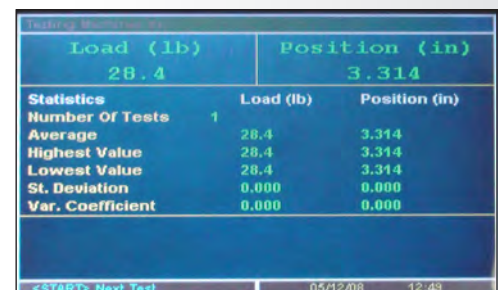
Microprocessor control and operator-friendly software makes the 17-76 simple to operate. A new Servo motor design provides closed loop feedback for accurate and repeatable position control. Ergonomic control layout maximizes the testing sequence while minimizing sample testing errors resulting in incorrect data. The instrument meets or exceeds all international testing standards for accuracy, precision, and parallelism.

System software includes 8 corrugated test methods for quick access including: RCT, CCT, ECT, CMT, FCT, PAT, CLT and SQT-score test which calculates score ratio of scored verses unscored samples. Test methods can be created by the operator and stored for future reference to simplify test set up. Other compression methods include peak force, peak height and stack load.



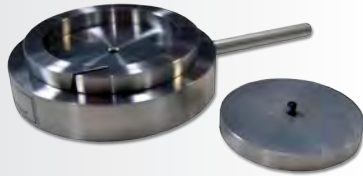
Intuitive software design and touch panel allows simple test operation.

Test screen automatically provides result data and statistics after each test.

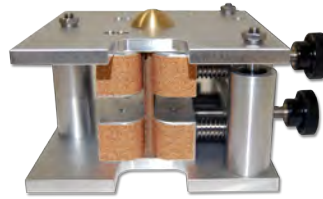


# Compression Tester

## Model 17-76



RCT: Ring Crush Test fixture  
17-11-13



ECT: Edge Crush Test fixture  
17-11-49



PAT: Ply Adhesion Test fixture  
17-11-09

Ranges		
Measuring range	0 – 1000 lb ( 0- 4448 Newton)	
Load cells	500 lb, 1000 lb (2250 N, 4448 N)	
Accuracy	± .5 % of reading	
Stroke length	8 in (203 mm) optional 16 in (406 mm) or 24 in (610 mm)	
Measuring units	N, N/m <sup>2</sup> , lb, lb/in <sup>2</sup> , kg or kg/m <sup>2</sup>	
Speed	Test Speed	0.2 - 20 in/min (5.08 -508 mm/min)
Platen size	Return Speed	10 in/min (254 mm/min)
	Upper platen	7 x 7 in (178 x 178 mm)
	Lower platen	7 x 7 in (178 x 178 mm)
Statistics display	<ul style="list-style-type: none"> <li>▪ Number of tests</li> <li>▪ Highest value</li> <li>▪ Lowest value</li> <li>▪ Average</li> </ul>	<ul style="list-style-type: none"> <li>▪ Standard deviation</li> <li>▪ Variation coefficient</li> <li>▪ Max. number of tests : 100 (in one test series)</li> </ul>
Machine requirements and specifications		
Power	120V/220Volt 50Hz/60Hz	
Safety features	Overload protection based on load cell in use	
Connections	RS232C output, built-in printer	
Languages	Pre-programmed with 3 languages	
Physical specifications	W x D x H	17 in x 21.5 in x 28 in (43 cm x 55 cm x 71 cm)
	Weight	149 lbs (68 kg)
Standards		
RCT test	APPITA/AS 1301.407s, DIN 53134, ISO 12192, SCAN P34, TAPPI T 822	
CMT test	APPITA/AS 1301.434s, ISO 7263, DIN 53134, SCAN P27, TAPPI T809	
CCT test	SCAN P42, TAPPI T 843	
PAT test	APPITA/AS 1301.430s, TAPPI T 821, FEFCO No. 11	
ECT test	APPITA/AS 1301.444s, ISO 3037, ISO 13821, DIN 53149, SCAN P33, TAPPI T 811, TAPPI T 823, TAPPI T 838, TAPPI T 839, FEFCO No. 8	
FCT test	APPITA/AS 1301.429s, EN 23035, ISO 3035, SCAN P32, TAPPI T 825, FEFCO No. 6, ASTM D2412	

