

KOENIG & BAUER

alphaJET

Continuous Inkjet (CIJ)



we're on it.

EN



Uncompromising reliability
Coding
with an outstanding value for money.

For over 45 years we have been developing and manufacturing high quality coding technology products at our site in Veitshöchheim, Germany. Our focus is on first-class quality, outstanding performance and all this in combination with unbeatable reliability. We're on it.



Contactless coding and marking with continuous Inkjet (CIJ) is ideal, when speed and legibility of the characters are important for applying variable dates directly at the production line.

In addition to precise printing results, our alphaJET printers offer you a very high degree of reliability in everyday production. Perfectly matched inks ensure the quality for your application. Put us to the test.

Every industry has its own requirements for product marking and technology.

Ongoing digitalisation and responsibly-minded sustainability are always in our focus.

The Koenig & Bauer Coding portfolio offers a choice of models to meet your needs in every application to fulfil your individual coding and marking requirements.

Versatile, no matter which industry

Food and Sweets

Mark your product plastic packaging, tin-plate, cardboard or film, with a current date, batch number and codes – according to your wishes. If required, simply add your individual promotion.



Beverages and Dairy

No matter whether you pack in glass, PET, cans, paper, composite packaging, foil or bags: You will obtain a permanent and high-contrast coding.



Cosmetics, pharmaceuticals and drugstore products

Designs and high-quality graphic compositions are printed accurately and precisely, also on glass and plastic.

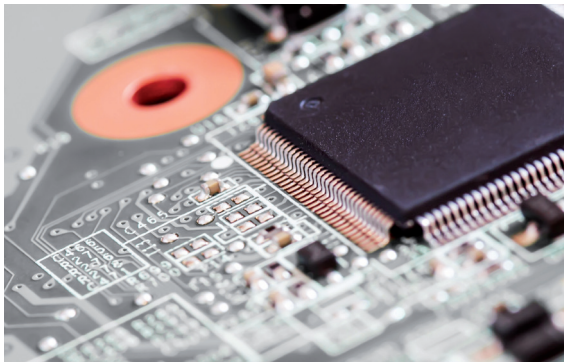


alphaJET continuous inkjet printers mark perfectly in all industries, on a wide variety of materials and surfaces.



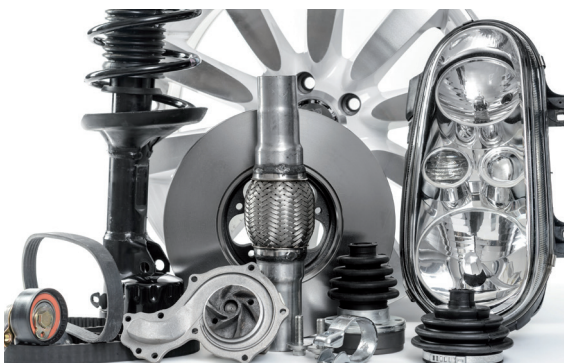
Cable and tubes

Regardless of the environmental conditions, you can mark cables, pipes, wires or hoses, clearly and legibly; even at very high speeds. We offer you high-contrast inks in various colours and the best adhesive properties for your application.



Electronics and components

Semiconductors, sensors, terminals, connectors, printed circuit boards, etc. – Mark your product in detail with a company logo, batch number, 1D or 2D codes for traceability, quality assurance and legal specifications.



Automotive

Datamatrix code, QR code, logo and other data in excellent readability and sharpness. Protect original products from counterfeiting. Get a clear identification by means of a precise marking.

Facts!

Thanks to simple, intuitive operation and intelligent software solutions, you get the best performance and gain around

+ 20 %
productivity

From high-quality materials in a modern, quality-assured production, coding systems are built according to the latest state of the art with an

uptime > 99 %

Achieve the lowest consumption on the market, minimum operating costs and absolutely calculable follow-up costs

> 27 %
savings

Compared to the average market level.

Do you want to make the most of savings potentials?

The alphaJET has the most efficient solvent recovery system RE-SOLVE Ultra. This saves you money every day. Clever financing solutions (e.g. rental or pay per code) and well thought logistics and service concepts increase your savings potential.

You require perfect start-stop behaviour from your marking device?

The combination of optimised nozzle closure, nozzle flushing and head heating form the Smart Start Technology integrated in the alphaJET⁵.

Even if your printer is in stand-by mode for a longer period of time, intermediate start-up or intensive cleaning processes are not necessary before restarting.

This saves valuable time.

In a nutshell.

You want more colour contrast for your coding?

Operate your alphaJET inkjet with pigmented ink. Our large ink portfolio, from high-contrast to food grade to well adherent ink for challenging materials, our selection has the right answer for your requirements.

Are your company's production facilities located internationally?

We offer you a competent sales and service team worldwide. The alphaJET does not only print in other languages, its colour touch display can be easily adapted to many language variants (e.g. Arabic, Cyrillic, Chinese and many more).

The marking should not lead to a loss of quality of the typeface even with increasing production?

The reliable alphaJET printers have been the fastest continuous inkjet printers on the market for years and are ready for your production increase.

Is simple integration / control important to you?

The alphaJET has the matching interfaces to be easily connected to your machinery. Its smart integration offers you all possibilities for the future. Incidentally, you can also centrally operate, monitor and control all alphaJET printers with the modular PC software code-M and even verify the print image in real time with *print & check*.

Technical specifications alphaJET models



	alphaJET mondo	alphaJET [®] HS	alphaJET [®] SP	alphaJET [®] X
Performance				
Line speed max.	780 m/min	1.300 m/min	1.300 m/min	800 m/min
Line speed at 2,5 mm character width	385 m/min	600 m/min	695 m/min	400 m/min
Max. lines	5	4	5	5
Print head				
Nozzle size	62 µm	50 µm	42 µm	62 µm
Active Ink Flow	-	✓	✓	✓
Smart Start Technology	-	✓	✓	✓
Nozzle closure	-	✓	✓	✓
Supply hose length	3 m	4 m	4 m	4 m / 6 m
Ink				
Standard	✓	✓	✓	✓
High-contrast	✓	✓	✓	✓✓
Special	✓	✓	✓	✓✓
Operation				
Touchscreen	8,4"	10,4"	10,4"	10,4"
Camera interface	✓	✓	✓	✓
code-M	✓	✓	✓	✓
Managed Services	✓	✓	✓	✓
Special software	-	✓	✓	✓
Safety				
Protection class*	IP 65	IP 65	IP 65	IP 65
Cooling function	-	✓	✓	✓
RE-SOLVE Ultra*	✓	✓	✓	✓
Dimensions (H x W x L; mm)				
Housing	455 x 350 x 290, 18 kg	592 x 320 x 320, 23 kg	592 x 320 x 320, 23 kg	620 x 321 x 320, 23 kg
Print head	145 x 40 x 40, 2 kg	190 x 40 x 40, 2 kg	190 x 40 x 40, 2 kg	190 x 40 x 40, 2 kg

alphaJET⁵

Flexibility

Wider ink portfolio for almost every application: high-contrast, sustainable, adhesion properties, special performance, etc.

Smart Start Technology for perfect start-stop performance

Many state-of-the-art solutions are included as standard

Integration

Easy integration due to compact design and clever accessories

Interfaces offer smart integration possibilities into machinery and networks

Easy integration via wizards and On-Screen help

Velocity

Highest print speeds

Ultra fast handling and data processing

Smart Start Technology for perfect start-stop performance

Improved design makes service even faster and easier

Endurance

Promised service life for 20.000 hours on the pump motor - equivalent to approx. 11 years in single-shift operation

Extended interval for filter change

Top result in the TCO*-calculation due to favourable prices for consumables, low solvent consumption and low-maintenance operation

alphaJET Continuous Inkjet printers ensure accurate results and excellent reliability in any application.



Smart Start Technology

is the optimised combination of

- Nozzle shutter
- Nozzle flushing
- Print head heating

Smart Start Technology, Active Ink Flow and extremely precise pump pressure control ensure the alphaJET5's perfect start-stop behaviour and consistent print quality.

The inkjet that is ready for immediate use even after weeks of downtime with only minimal cleaning effort.



Easy integration into your production line

Unique details and functional accessories
make your coding even better

Display

The large, full-colour touch screen

- responds in glove mode
- in light or dark mode
- provides real time information
- saves time with guided instructions

Like a smartphone - the new, intuitive user interface of the alphaJET 5 X can be navigated with swipe gestures.

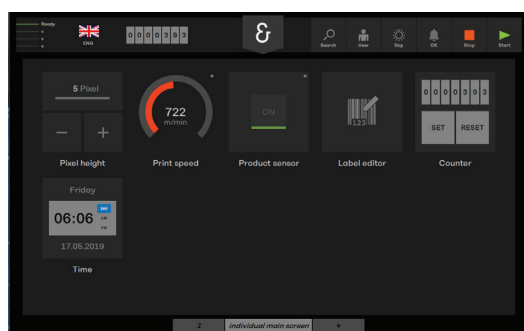


Fig.: User interface alphaJET 5 X

Software solutions

Extend the alphaJET with a software solution that is convenient for you. Many state-of-the-art solutions are already included as standard with your alphaJET.

Simplify the operation, e.g. with a handheld scanner, to avoid incorrect entries.

With one or more modules of the code-M software suite, you can conveniently prepare texts from your desktop, control and monitor your printers.

Supplement your alphaJET with functional accessories

- Handheld scanner
- Camera
- Signal beacon (external)
- Mobile cart
- Cleaning device
- Cable guide unit
- etc.

Camera interface *Print & Check*

Benefit from the advantages of camera-based production reliability. Combined marking and print control of variable texts and codes in real time; check every single print for presence, legibility and content with Print & Check.

We are happy to support you with standardised and also with individual solution recommendations.

Print head

- Active Ink Flow ensures optimum ink viscosity. The result is a consistent superior print quality.
- The compact design allows integration even when space is limited.
- Thanks to the modular design, individual parts are very easy to clean or to exchange
- Save unnecessary traversing units and axes by rotating the print image.

Managed Services

All of the current alphaJET systems are compatible for taking advantage of the efficiency-enhancing benefits of our Kyana artificial intelligence.

Our hotline supports you fast and directly via complimentary remote access.

The dashboard shows the printer status clearly and in real time.

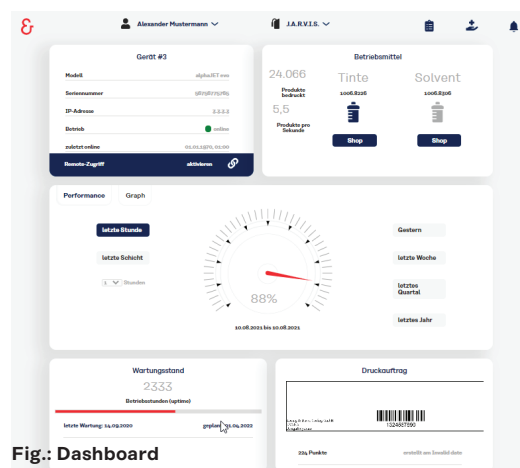


Fig.: Dashboard

More freedom in coding





Font / Lines	Print sample
m5	ABCDEFGH 1234567890
m7x5	ABCDEFGH 1234567890
m23	ABCDEFGH 1234567890
m32x24	ABCDEFGH 1234567890
a7x5	ABCDEFGH 1234567890
a9x5	ABCDEFGH 1234567890
a9x6	ABCDEFGH 1234567890
Arial 24	ABCDEFGH 1234567890
Arial 32	ABCDEFGH 1234567890
ocr 11x7	ABCDEFGH 1234567890
2-lines m5	ABCDEFGH 1234567890 ABCDEFGH 1234567890
2-lines m7x5	ABCDEFGH 1234567890 ABCDEFGH 1234567890
2-lines m15	ABCDEFGH 1234567890 ABCDEFGH 1234567890
4-lines m7x5	ABCDEFGH 1234567890 ABCDEFGH 1234567890 ABCDEFGH 1234567890 ABCDEFGH 1234567890
6-lines a7x5	ABCDEFGH 1234567890 ABCDEFGH 1234567890 ABCDEFGH 1234567890 ABCDEFGH 1234567890 ABCDEFGH 1234567890 ABCDEFGH 1234567890
8-lines m5	ABCDEFGH 1234567890 ABCDEFGH 1234567890 ABCDEFGH 1234567890 ABCDEFGH 1234567890 ABCDEFGH 1234567890 ABCDEFGH 1234567890 ABCDEFGH 1234567890 ABCDEFGH 1234567890

Print samples


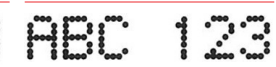
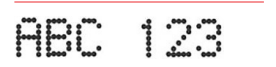

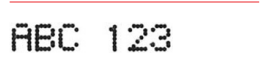
Barcodes / 1D codes

			
GS1 128 (EAN 128)	Code 39	2/5 interleaved	EAN 13


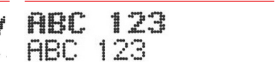
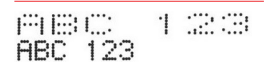
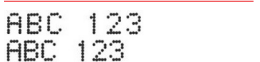
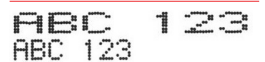
2D codes

			
DMC code square	DMC code rectangle	QR code	DOT code

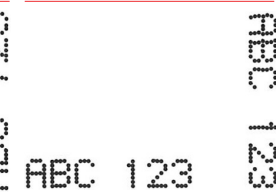
Nozzle size

				
70 µm	62 µm	55 µm	50 µm	42 µm



Text variants

				
italic	bold	blank strokes between strokes	character spacing (blank strokes between characters)	twin stroke / multiple stroke

Formats

				
Rotate 90°	Rotate 90° clockwise	mirrored	upside down	inverted / negative

Tower fonts

	
m5t	m7x5t

Languages

АБДЕГЖЛИЯ 12345 小字符喷码机 alphaJET系列 ٣٢١ أ ب ت ج ح خ

Logos



The print samples shown in this overview are for visualization purposes only. The real print images depend on various influencing factors such as e.g. environmental conditions, substrate, surface, etc. We would be happy to provide your personal print sample for your specific application.



5 good reasons to choose alphaJET⁵

01

Due to the low consumption in combination with affordable prices you can save money.

02

Highest production reliability. Machine uptime of more than 99%.

03

Easy integration and high-speed printing increase your productivity.

04

The extensive ink portfolio allows you to react flexibly to customer wishes.

05

A worldwide competent sales and service team supports you at any time.

At a glance

General technical data

Interfaces

- Network (TCP/IP)
- RS232
- USB (file-management)
- Digital I/O port
- Potential-free programmable alarm relay
- 4-colour signal beacon (option)

Operation

- Touch screen, graphical user interface
- Adjustable user rights
- Modular software code-M
- Managed Services
- Windows printer driver

Text composition

- Product counter (with auto-stop function), time functions
- Global Counter (for all print texts)
- DataMatrix, QR code, barcodes, DotCode
- Characters and logos (BMP-format)
- Data fields (can be filled via an interface)
- Prompted fields (input prompt)
- True Type Fonts (international language and character sets)

Product attributes

- Protection class IP 65 (dust-tight and protection against splashed water)
- Smart Start Technology
- RE-SOLVE Ultra (solvent recovery)
- User management

Connection values

- Mains voltage (AC) 86 - 264 V, $\pm 10\%$
- max. power consumption 0.5 A / 230 V; 1 A / 110 V

CONTACT

Your non-committal inquiry by email or by telephone is the first step.
Please contact us.

ANALYSIS

Our experts will work with you to clarify your current situation and identify your demands.

CONCEPT

According to your demands we will make you an attractive offer and, if you wish, carry out a test run in your production.

RESULT

If you agree with that concept, we will realise your order and support you throughout the entire implementation process.

Koenig&Bauer Coding GmbH
Benzstraße 11
97209 Veitshöchheim, Germany

T +49 931 9085-0
F +49 931 9085-100
info-coding@koenig-bauer.com

coding.koenig-bauer.com

Text excerpts and illustrations may only be used with the permission of Koenig&Bauer Coding GmbH. Illustrations may show special equipment which is not included in the basic price of the systems. The manufacturer reserves the right to make technical and design changes.



08/2021-en