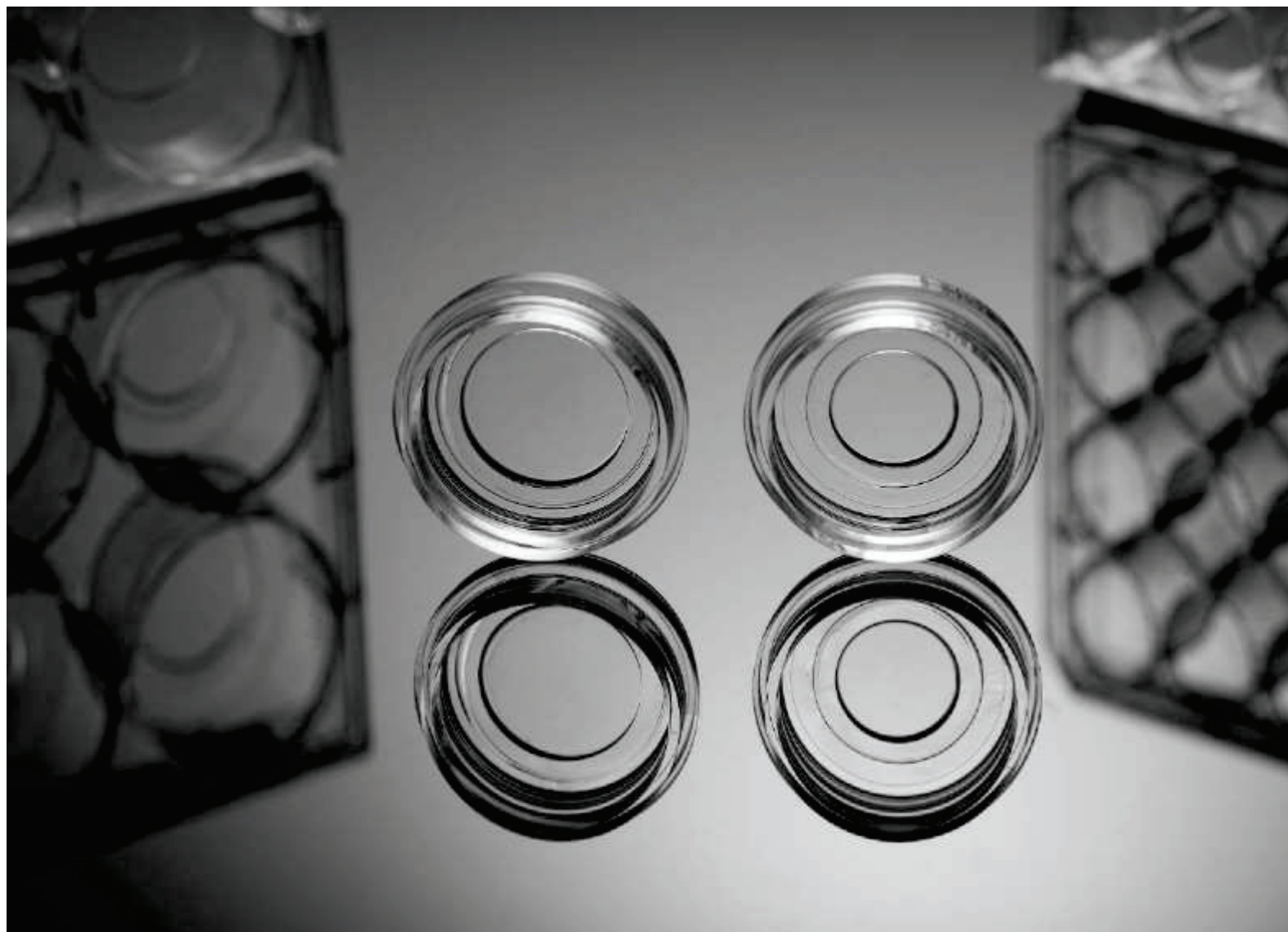


GLASS BOTTOM CELL CULTURE DISHES&PLATES



PRODUCT FEATURES

NEST glass bottom series are applied in Confocal Microscope, High Resolution Microscope, Differential Interference Contrast Microscope, Polarized Light Microscope and Phase Contrast Microscope for cell observation.

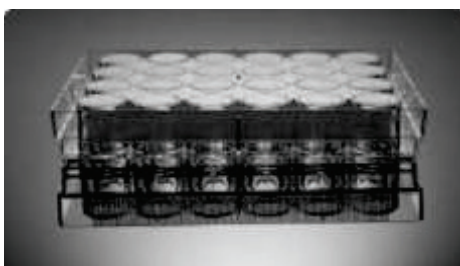
- Can be used for live cells observation
- Special bottom design for easy grip
- High quality cover glass of standard thickness 0.16-0.19 mm
- Round cover glass insert for good appearance
- Medical adhesive glue to guarantee non-cytotoxicity
- Sterilized by E-beam, SAL=10⁶



Clear alphanumeric codes for goods identification

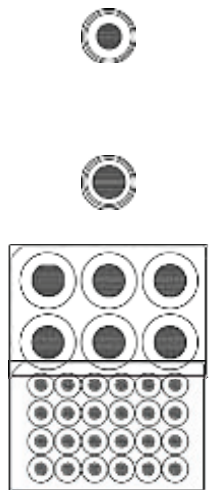


Round cover glass insert for good appearance

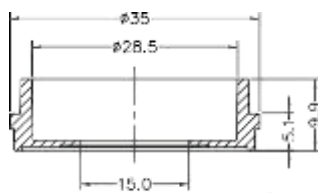


Application

- Cell biology: STEM cell research, cell cycle regulation
- Protein chemistry: GFP (green fluorescent protein) identification
- Molecular biology: genetic mapping and complex genetic research
- Biological research based on Laser Confocal Microscopy
- Research based on dual / multi-photon confocal microscopy
- High-quality imaging system
- Infrared imaging



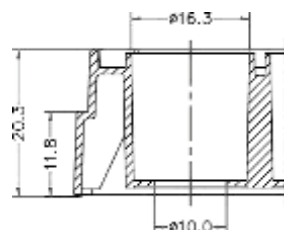
Cat. No.	Type(mm)	Dimension (mm)	Sterile	/Pack	/Case
801002	35	15	+	10	200
801001	35	20	+	10	200
801004	6	20	+	1	10
801006	24	10	+	1	10



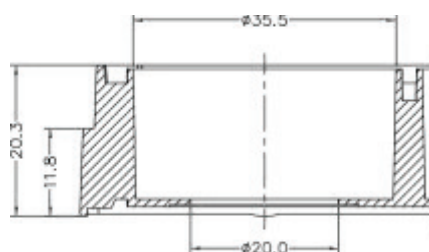
1



2



3



4

1 Ø15 Glass bottom dish

2 Ø20 Glass bottom dish

3 24 Bottom plate

4 6 Bottom plate

Unit:mm